

Beyond Fuel

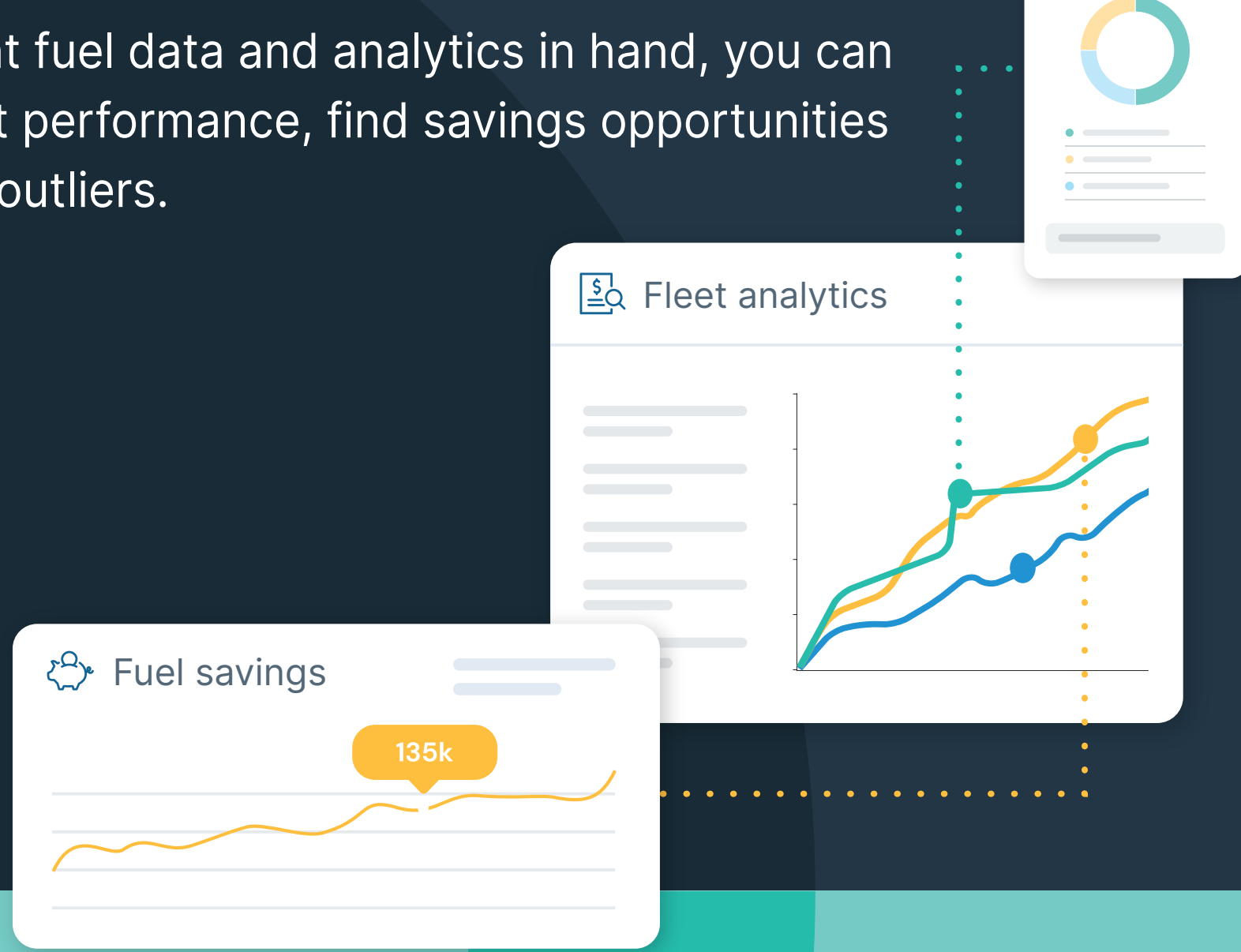
How your fleet card is so much more than a gas card

Today's fleet cards do far more than pay for gas—they're powerful tools that support every corner of your operation. From managing EV charging and maintenance to streamlining travel expenses and enabling smarter routing with GPS, your fleet card brings convenience, control, and cost savings together in one place. Here's a closer look at the many ways your WEX Fleet Card goes beyond the pump to support your business.



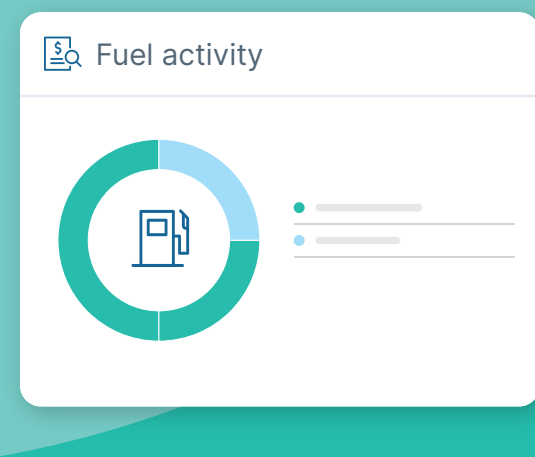
Simplifying reporting with detailed data

With the right fuel data and analytics in hand, you can improve fleet performance, find savings opportunities and identify outliers.



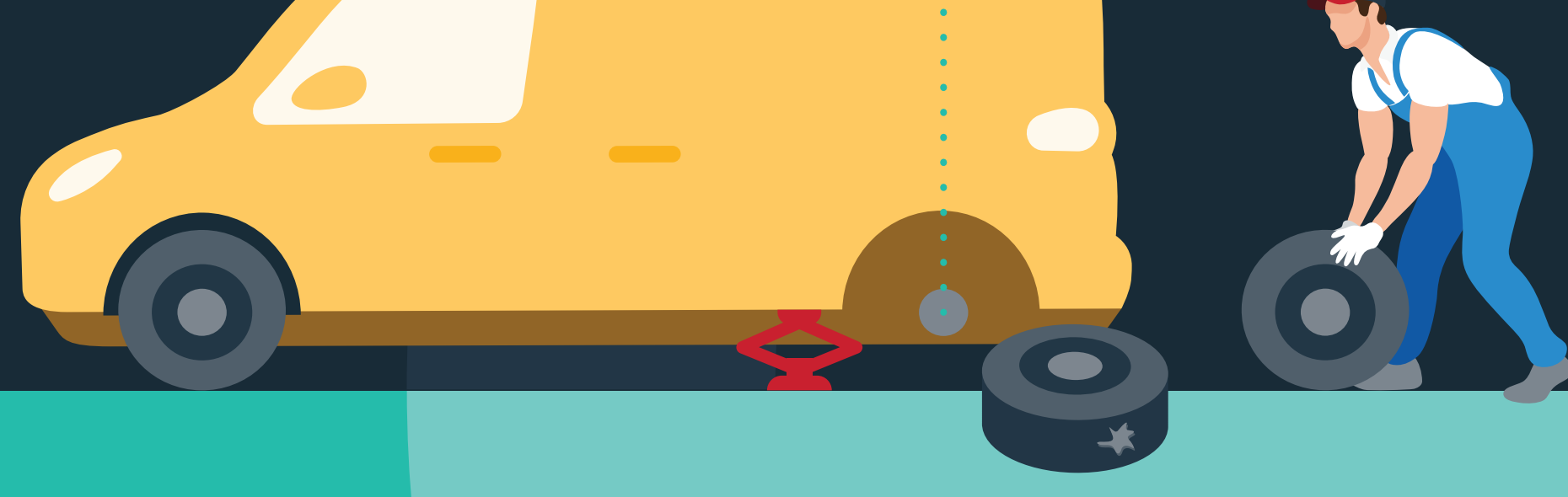
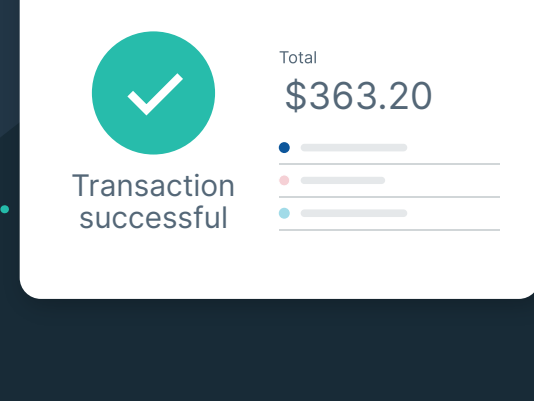
Charging your EVs

Manage fuel and EV charging costs on the same account.



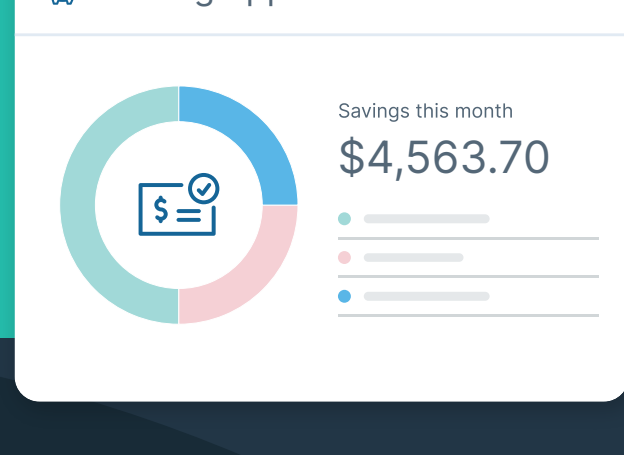
Tracking and managing maintenance

Pay for tires and auto parts whenever a replacement is needed.



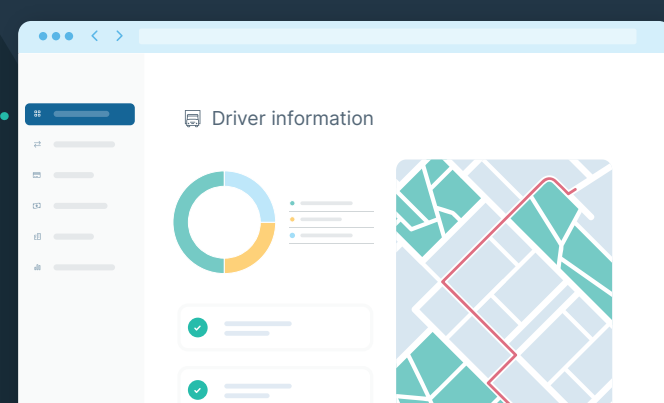
Saving on travel expenses

Enjoy discounted rates when booking hotel stays for your employees.



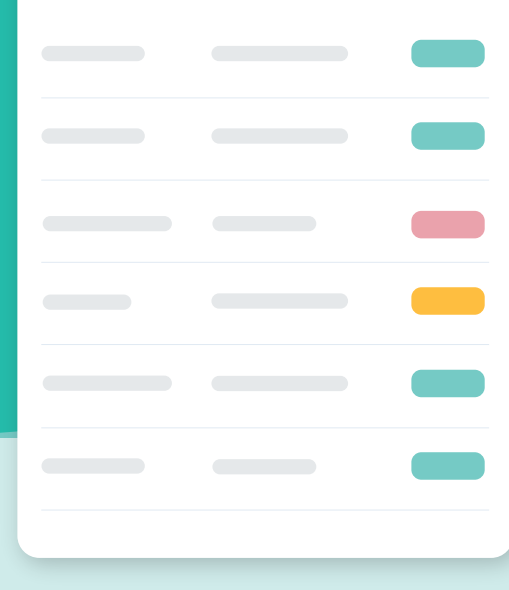
Managing fuel spend and routes with GPS

GPS tracking supports next level operational efficiency and savings with valuable data and analytics.



Accessing 24/7 roadside assistance

Your drivers have access to 24/7/365 roadside assistance and your business will pay a preferred rate.



Streamlined payments for so many business needs make operations easier, while data and analytics enhance oversight and control. Expanding your partnership with WEX means enjoying even more of the convenience, control and security you're used to.



Want to learn more about all of the benefits that come with the WEX Fleet Card?

Visit www.WEXinc.com to learn more!

wexTM